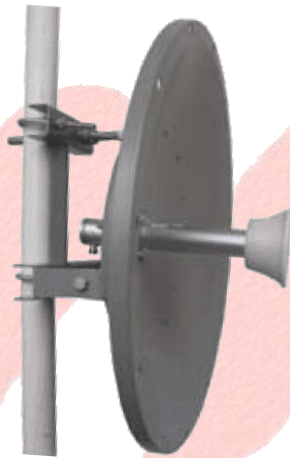


RCA-DIS058-30

DISH Dual Polarization Antenna



*RF CABLE NOT INCLUDED
RADOME NOT INCLUDED*

MATERIALS

DISH REFLECTOR

- Anodized Steel Alloy
- MOULD Press
- Low wind loading

BRACKET & BOOM

- Anodized Aluminum Alloy
- Aluminum Feed Reflector
- Anodized Iron

SPECIFICATION

■ FREQUENCY:	5.15-5.85		Ghz
■ BANDWIDTH:	700		Mhz
■ BEAMWIDTH:	5	elevation	Degree
■ BEAMWIDTH:	5	azimuth	Degree
■ GAIN:	30		dB
■ POLARIZATION:		V/H	
■ FRONT TO BACK RATIO	>35		dB
■ ISOLATION:	>28		dB
■ WIND LOAD:	60	125mph	Lbs
■ SIZE:	600	Diameter	mm
■ CONNECTOR:	2-N Type		
■ WEIGHT:	5		Kgs
■ MAST SIZE:	> 52	Diameter	mm

This document and the information contained is property of Roughclaw Enterprise. Unauthorized copying is not allowed. The information in this document is believed to be correct at the time of writing. Roughclaw Enterprise reserves the right at any time to change said content, circuitry and specifications.