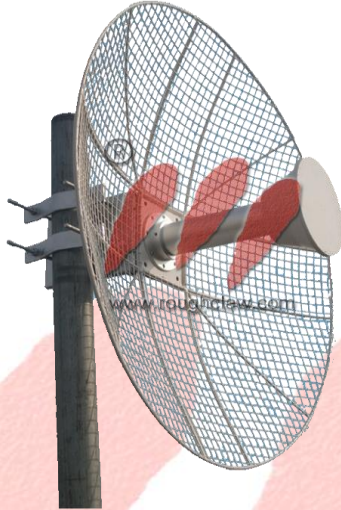




RCA-DPG058-28



Pigtail Cable Not included

MATERIALS

GRID REFLECTOR

- Anodized Aluminum Alloy
- Die-Cast Process
- Low wind loading

BRACKET & BOOM

- Anodized Aluminum Alloy
- Aluminum Boom
- Anodized Iron

SPECIFICATION

■ FREQUENCY:	4950-5850	Mhz
■ BEAMWIDTH:	6 elevation	Degree
■ BEAMWIDTH:	5 azimuth	Degree
■ GAIN:	28 x 2	dB
■ POLARITY:	Dual	V/H
■ V.S.W.R.	<1.5 Typical	
■ FRONT TO BACK RATIO	>30	dB
■ NOMINAL IMPEDANCE	50	Ohms
■ MAXIMUM POWER	50	Watt
■ WIND LOAD:	38 100mph	Lbs
■ WIND LOAD:	58 125mph	Lbs
■ SIZE:	600 diameter	mm
■ WEIGHT:	5	kgs
■ MAST:	2	inch
■ CONNECTOR	2 x N	Female

This document and the information contained is property of Roughclaw Enterprise. Unauthorized copying is not allowed. The information in this document is believed to be correct at the time of writing. Roughclaw Enterprise reserves the right at any time to change said content, circuitry and specifications.