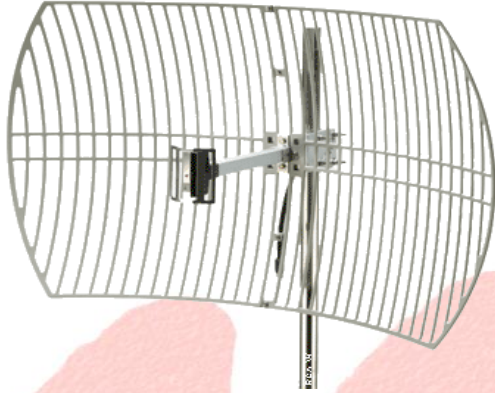


RCA-GDR024-24



MAST NOT INCLUDED

MATERIALS

GRID REFLECTOR

- Anodized Aluminum Alloy
- Die-Cast Process
- Low wind loading

BRACKET & BOOM

- Anodized Aluminum Alloy
- Aluminum Boom
- Anodized Iron

SPECIFICATION

■ FREQUENCY:	2.4		Ghz
■ BEAMWIDTH:	12	elevation	Degree
■ BEAMWIDTH:	9	azimuth	Degree
■ GAIN:	24	± 1	dB
■ POLARITY:		V/H	
■ FRONT TO BACK RATIO	23		dB
■ WIND LOAD:	38	100mph	Lbs
■ WIND LOAD:	58	125mph	Lbs
■ SIZE:	600 x 900		mm
■ WEIGHT:	12		Lbs
■ MAST:	2		inch

This document and the information contained is property of Roughclaw Enterprise. Unauthorized copying is not allowed. The information in this document is believed to be correct at the time of writing. Roughclaw Enterprise reserves the right at any time to change said content, circuitry and specifications.